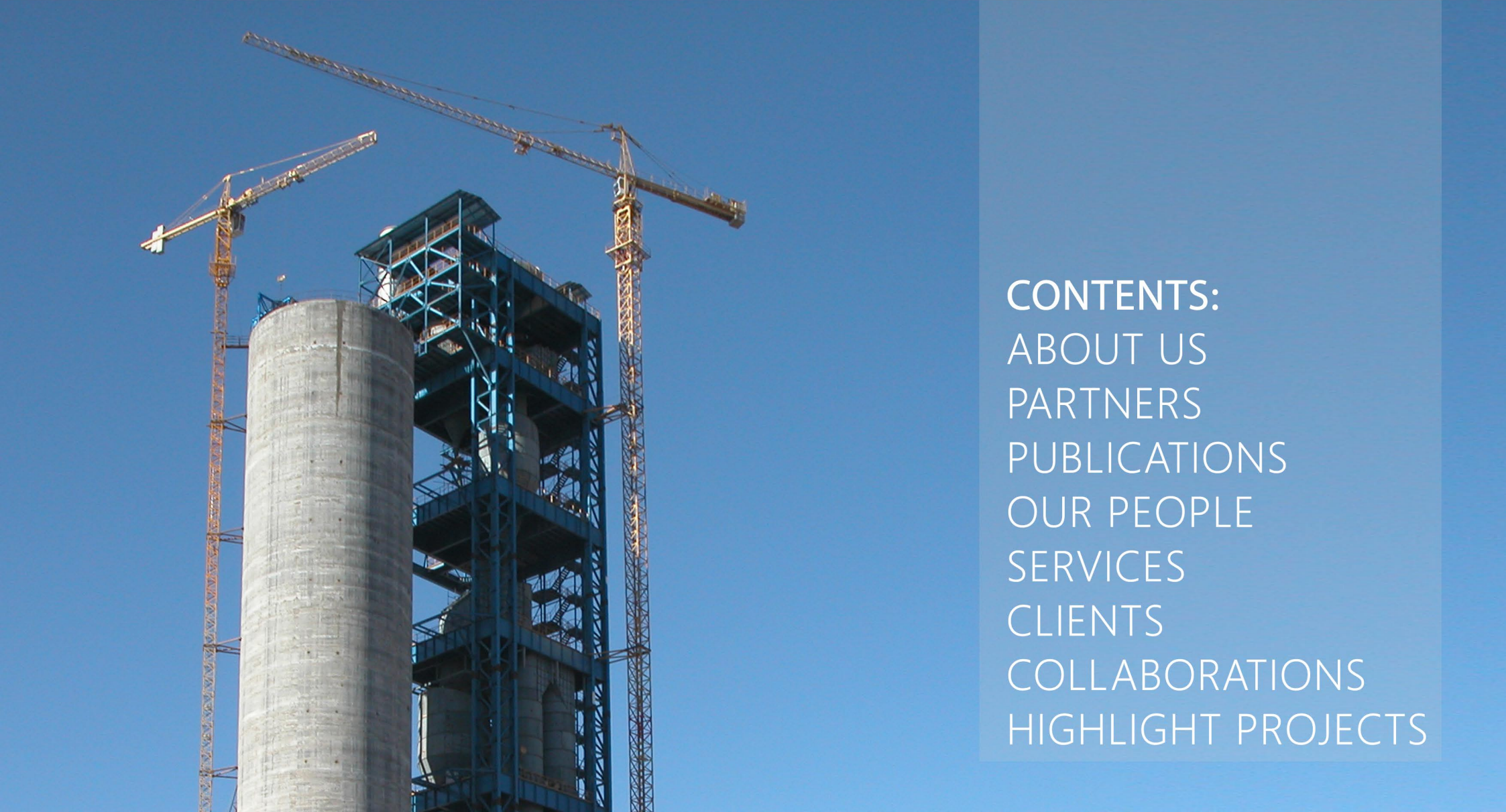


SANO CONSULTING ENGINEERS COMPANY PROFILE



CONTENTS:
ABOUT US
PARTNERS
PUBLICATIONS
OUR PEOPLE
SERVICES
CLIENTS
COLLABORATIONS
HIGHLIGHT PROJECTS

About us

SANO was founded as SANO Structural Engineers in **1960**, and incorporated as **SANO Consulting Engineers** in **1968**. SANO consulting engineers is a multi-disciplined engineering firm, employing a staff of 90 professionals comprised of structural, civil and geotechnical engineers, planners, estimators, technicians and construction inspectors.



Over the past **five decades**, SANO has accomplished **over 1000 projects** in cement, steelmaking and lime plants, multi-storey parkings, subway tunnels and stations, urban bridges, sewage systems, high-rise buildings, hotels & etc. Our successes in diverse areas, lead us to gain a unique experience and knowledge to provide the most effective and sustainable solutions for our clients. As a result most of our relationships with our clients remained loyal over years. We listen to their issues of serious concern and work towards economical sensible solutions. SANO has been registered in Management and Planning Organization of Iran for Design and Supervision of Structures, Bridges, Geotechnical Investigations and for project management. SANO consulting engineers was also listed on the top structural consulting firms in the country. The firm's principals and associates are active participants in Iranian National Building Codes Publications and Technical Associations.

“ SANO has been guided by the focused philosophy since the firm's beginning-vision trustworthy, integrity and technical expertise. ”



SIMPLY PUT, SANO's GOALS ARE TO :

Maintain the highest standard of quality on each and every project.
Delivering projects on time & on budget.
Exceeding our clients expectations.

PARTNERS

GH. Zohari

Management Consultant
University of Tehran, Civil Engineering, MSc., 1959
Industrial Management Institute, MBA, 1978

H. Shahbazi

Chairman of the Board
University of Tehran, Civil Engineering, MSc., 1967

R. Vaezi

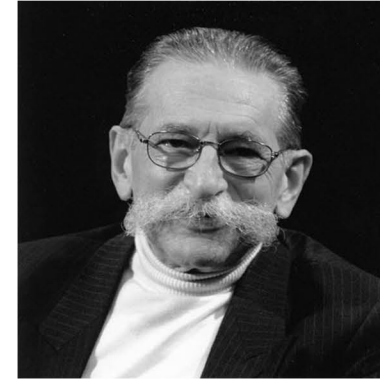
Deputy Chairman of the Board
University of Tehran, Civil Engineering, MSc., 1973

B. Heshmati

Managing Director
Board of Directors
University of Tehran, Civil Engineering, MSc., 1974

Dr. Mehdi Ghalibafian

The late Mehdi Ghalibafian (1935-2007) was one of the founders of SANO Consulting Engineers in 1960. Dr. Ghalibafian was a lifelong academic, a dedicated teacher and an avid supporter of education. During his lifetime, Dr. Ghalibafian was in charge of many distinguished projects in Iran. As a university professor he have trained and educated many engineers. He is credited for introducing reinforced concrete in Iran. Thus he is recognized as "the father of Iranian concrete society."



M. Hosseini

Geotechnical Department Director
University of Tehran, Civil Engineering, BSc., 1975

S. Sepanji

Technival Director
Sharif University of Technology, Structural Engineering, BSc., 1976

M. Mafizadeh

Drafting Director

Y. Dilmaghani

Financial Department Director
NIOC Accounting Faculty, Accounting, BA., 1980

M. Hosseini

Substitute Member of the Board
Aiu, Tehran, Industrial Engineering, BSC., 2007

Institute of Standard And Industrial Research of Iran

M.Ghalibafian

G.Zohari

Management And Plan Organization

M.Ghalibafian

G.Zohari

H.Shahbazi

R.Vaezi

Ministry of Housing And Urbanization

M.Ghalibafian

R.Vaezi

Building And Housing Research Center

M.Ghalibafian

B.Heshmati

R.Vaezi

Ministry of Energy

M.Ghalibafian

R.Vaezi

Iranian Association of Structural Engineers

R.Vaezi

Tehran municipality – Technical Assistance

M.Ghalibafian

Training Fund

Cement Standard

Reinforced Concrete Code(18-1) To (18-5)

Design And Construction of Concrete Pavement of Airports

Welding Pamphlets (20-24) And 26

Design Regulations of Reinforced Concrete Structures

Basic Descriptions And unit Price List

Iranian Concrete Code

Concrete Terms

Scope of Services in Type III Contracts

Commentary of Iranian Concrete Code

Design Regulations For Underground Water Concrete Culverts

National Construction Specification Committee

Constructions Safety Committee

Design And Construction of Concrete Structures

Iranian Code of Practice For Seismic Resistant Design of Buildings (2800)

Iranian Code of Practice For Seismic Resistant Design of

Road And Railway Bridges

Guide Book For Steel Structure Joints

No.519 Code, Revision

Publications of large Dams Committee

Structural Standards of Water Industry

Drafting Standards Criteria

Retaining Walls (Scope of Services)

Design of Retaining Walls

Drafting Standards, No.256 of Management & Plan Org.

Guide Book For Design And Construction of High Rise Structures

Guide Book For Steel Structures

Iranian Code of Practice For Seismic Resistant Design of Bridge

Instruction Manuals For Concrete And Reinforcement

OUR PEOPLE

SANO consulting engineers take pride in its employees. We continuously recruit and rising our new employees to add to our knowledgeable and experienced team. This will lead us to be listed as one of the leading consulting engineers in Iran.

Currently **SANO** have over **150** personnels including project managers, engineers,draft persons,site supervisors estimators and admins.

Services

SANO structural engineers have solved challenging problems in thousands of structures ranging from small buildings to large industrial projects. SANO is capable to offer wide range of engineering services from site investigation, on-site lab, geotechnical investigation to site supervision and design. Our team of engineers will determine appropriate solutions to meet each client's needs. Cement plants, steelmaking and lime plants, multi-story, parking, subway tunnels and stations, urban bridges, sewage systems, high-rise buildings, hotels etc. are some of challenging projects that SANO has accomplished in the past 55 years.



Building & Structures

- Architectural design
- Structural design, Modeling and analysis
- Mechanical, Electrical design
- Site supervision
- Structural condition assessment
- Structural component testing
- Nonlinear structural analysis
- Blast analysis
- Seismic risk assessment
- Seismic performance evaluation
- Earthquake damage assessment
- Repair and retrofit design and peer review

Geotechnical Services

- Site investigation
- Deep excavation design
- On-site lab for controlling soil, aggregates, concrete and asphalt. Material

Material Testing

- Structural component testing in central lab

Other Services

- Technical and financial supervision
- Preparing tender and contract documents for clients to select the contractors
- Cost estimating

Clients :

Ministry of Road & Urban Development
Ministry of Health And Treatment
Ministry of Health & Medical Education
Ministry of Petroleum
Ministry of Industry & Mines
Ministry of Agriculture
Standard Institute
Management & Planning Organization of Iran(MPO)
Housing Organization
National Gas Co.
Tehran Subway Co.
Tehran Municipality
Khoy Municipality
Khoramabad Municipality
Technical Education Organization
Ports & Navigation Organization
Iran Housing Organization
Islamic Republic of Iran Airline

SANO Consulting engineers has worked for a numerous of public and private clients providing engineering services. Presented below is a representation of our **major clients:**

Homa Airline
National Airline Co.
Imam International Airport
National Document Archive
Iran Dispatching Center
Central Bank of Iran
Tehran investing And public Co operations organization
Railway Construction Co.
Chemical Industry Investment Company of Iran
Iran Physical Education Organization
National Petrochemical Co.
Water And Energy Development Co. of Iran
Construction Engineering Office of Iran Navy Force
Investment For Chemical Industry
Management And Development of Iran
Petrochemical Industries Co.
Tavanir Co.
Ehdas-e-Sanat Co.
Mapna Co.

JOINT VENTURE WITH IRANIAN COMPANIES

PROJECT IMPLEMENTATION IN CORPORATION WITH INTERNATIONAL COMPANIES

POLYSIUS

SETEC

SKET

IBAU

C.P.AG

F.L.S

HOCHTIEF

M.G

F.C.B

AUMUND

H&B

ELLIN

DANIELLI

NCDRE

TCDRE

KHD Humboldt Wedag

KRUPP KOPPERS

GIBBS & HILL INTERNATIONAL

KNAUF ENGINEERING

HERMAN BLUM CONSULTING ENGINEERS

ACCEPT COMPANY

BAYTOUR CO. (TURKISH)

KRUPP COPPERS GMBH

TEHRAN BERKLEY CO. (MARINE)

ARTIMAN CO. (ARCHITECTURAL)

BAVAND CO. (URBANISM & ARCHITECTURAL)

KOMAC CO. (MECHANICAL & ELECTRICAL)

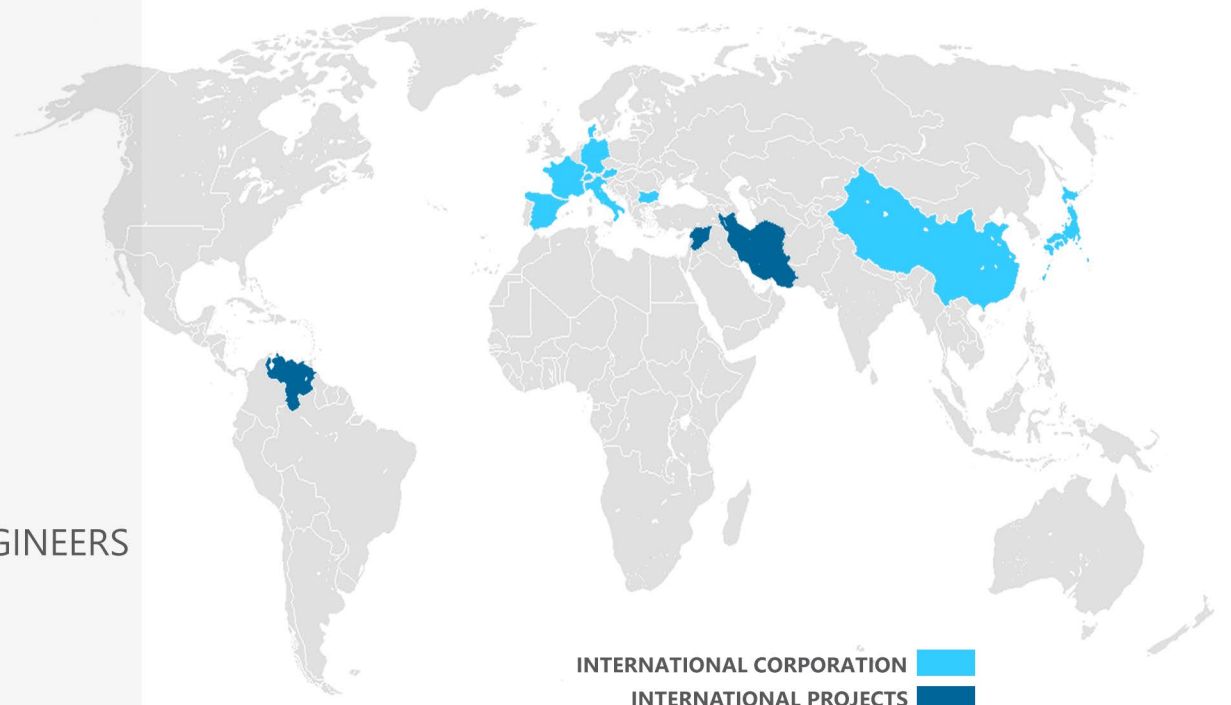
KANGAN GAS REFINERY

ARDAM CO. (ARCHITECTURAL)

TARH VA NEZARAT CO. (MECHANICAL AND ELECTRICAL)

TASSISSAN CO. (MECHANICAL AND ELECTRICAL)

SINAM CO. (ARCHITECTURAL)



INTERNATIONAL CORPORATION
INTERNATIONAL PROJECTS

SANO and Cement Plants industry

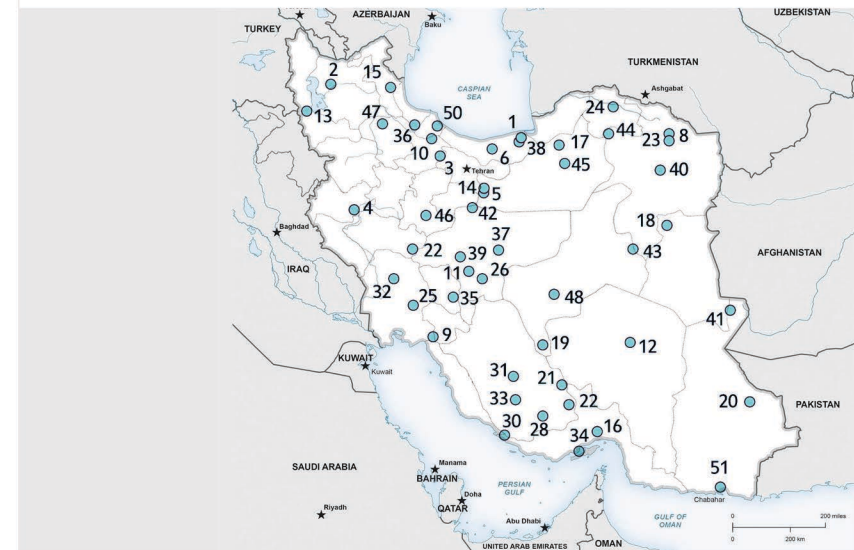
“ SANO Consulting Engineers has been involved in 150 contracts in 50 Cement Plants projects with different engineering services such as, structural design, architectural design, building mechanical and electrical design, cost estimating, rehabilitation & retrofit, Geotechnical investigation, Material Testing, Establishing In Situ Lab, Site supervision and highway engineering since 1972. ”



▽ List of SANO Cement Plants projects

- | | |
|------------------------------|--------------------------------|
| 1- Neka Cement Plant | 27- Yazd Cement Plant |
| 2- Soufiyan Cement Plant | 28- Larestan Cement Plant |
| 3- Abyek Cement Plant | 29- Kohkilouye Cement Plant |
| 4- Gharb Cement Plant | 30- Boshehr Cement Plant |
| 5- Tehran Cement Plant | 31- Fars Cement Plant |
| 6- Shomal Cement Plant | 32- Khozestan Cement Plant |
| 7- Doroud Cement Plant | 33- Farse Nou Cement Plant |
| 8- Shargh Cement Plant | 34- Gheshm Cement Plant |
| 9- Behbahan Cement Plant | 35- Shahre Kord Cement Plant |
| 10- Loushan Cement Plant | 36- Khazar Cement Plant |
| 11- Sepahan Cement Plant | 37- Ardestan Cement Plant |
| 12- Kerman Cement Plant | 38- Mazandaran Cement Plant |
| 13- Ormia Cement Plant | 39- Sarooj Cement Plant |
| 14- Ghaani Abad Cement Plant | 40- zavvare Cement Plant |
| 15- Arbehil Cement Plant | 41- Zaboul Cement Plant |
| 16- Hormozgan Cement Plant | 42- Neyzar Cement Plant |
| 17- Shahrood Cement Plant | 43- Golshan Tabas Cement Plant |
| 18- Ghaen Cement Plant | 44- Jovein Cement Plant |
| 19- Abade Cement Plant | 45- Biyarjomand Cement Plant |
| 20- Khash Cement Plant | 46- Nahavand Cement Plant |
| 21- Neyriz Cement Plant | 47- Khamse Cement Plant |
| 22- Darab Cement Plant | 48- Bohrouk Yazd Cement Plant |
| 23- Mashhad Cement Plant | 49- Khorram Abad Cement Plant |
| 24- Bojnourd Cement Plant | 50- Gilan Sabz Cement Plant |
| 25- Karoon Cement Plant | 51- Chabahar Cement Plant |
| 26- Esfahan Cement Plant | |

Location of SANO Cement Plants projects ▽



Hama cement plant (In Syria)

Contractor: EMC Company

Contract type: Design, Supervision and Quality Control, Testing of Concrete and Soil



This plant was constructed in Syria with the capacity of **1,000,000** tons of cement per year. Its executive operations was started in 2002 and inaugurated in 2007.



Cerro Azul cement plant (In Venezuela)

Client: Cerro Azul Cooperative Company
Contract type : Design and Supervision



This plant was constructed in Venezuela with the capacity of **3300** tons of cement per day. Its executive operations was started in June 2006 and inaugurated in 2014.

Khamseh cement plant

Contractor: Oxin Sanat Company

Contract type: Design and Supervision



This project is conducted as an EPC contract. The inauguration of this cement factory was on May 2014 with the capacity of 3500 tons per day.





Ardestan cement plant

Contractor: Iranshahr Civil Association

Contract type: Design, Supervision and
Quality Control, Testing of Concrete and Soil.

This cement plant has the capacity of **3500** tons of cement per day. In 2005, this project was introduced as elite project of the year by the Ministry of Industries and Business.



Mazandaran cement plant

Contractor: Espandan (No Avar Bana) Company
Contract type : Design & Supervision

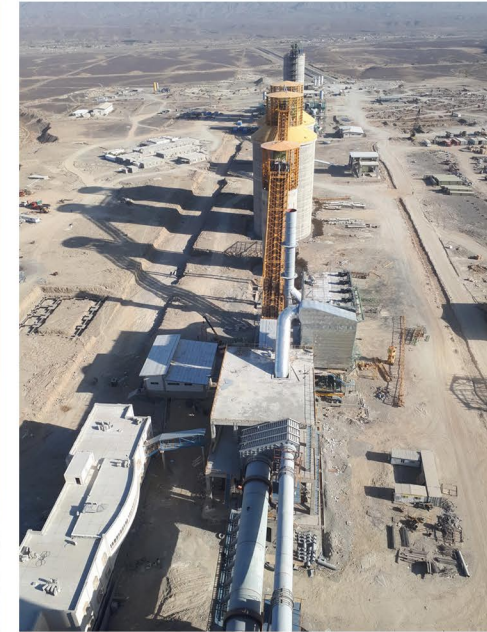
This cement plant has the capacity
of **3400** tons of cement per day.



Tis Chabahar cement plant

Contractor: Spandan (Noavar Bana) Company

Contract type: Design and Supervision



This project is conducted as an EPC contract. The inauguration of this cement factory was on Spring 2021 with the capacity of 3300 tons per day.



Jovein cement plant

Contractor: Pars Mantra Company

Contract type: Design, Supervision & Geotechnics



This project is conducted as an EPC contract. The inauguration of this cement factory was on September 2010 with the capacity of 5000 tons per day.



Shargh cement plant (line 3)

Contractor: Shaygun Company
Contract type : Design & Supervision
& Geotechnics

This cement plant has the capacity
of 2000 tons of cement per day.



Sepahan cement plant (Part of Line3)

Contractor: Daghigh & J.I.S.D Company

Contract type: Design and Supervision



This cement plant has the capacity of 3300 tons of cement per day.



Sarooj cement plant

Contractor: Daghigh Company

Contract type: Design, Supervision and Geotechnics



This project is conducted as an EPC contract
The inauguration of this cement factory was on 2007 with the capacity of **2000** tons per day.



Isfahan cement plant (line 4)

Contractor: Jihad Sazandegi Company
Contract type : Design & Supervision

This cement plant has the capacity
of **2000** tons of cement per day.



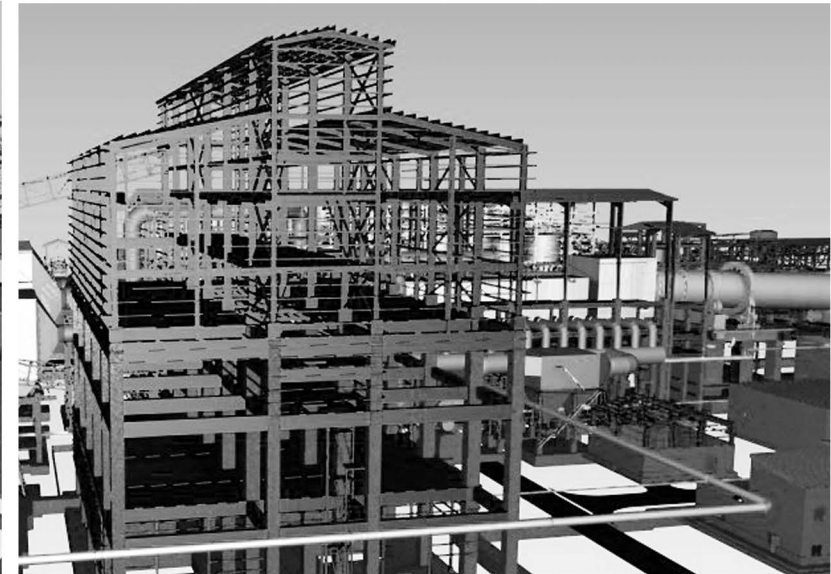
Boutia Pelletizing plant

Contractor: MGM Company

Contract type: Structural Design



The designing of this plant has been started from June 2014 with the pelletizing capacity of 2,500,000 tons per year.



Iranian National Library

Client: Department of Housing and Urban Development

Contractor: ArmehDasht Company

Contract type: Structural Design and Supervision



The inauguration of this national project was in February 2005.

Located at the north side of Hemmat highway in Tehran with the area of **97000** square meters. construction was started in 1996 and structural operations finished within 2.5 years.



Sattarkhan Towers

Client : Ministry of Roads & Urban Development

Main Contractor: National Construction Co.

Contractor : Dragadas Spain



This project was one of the very first high-rise reinforced concrete buildings in Iran (1970). Including three blocks with 20 residential floors.



Navab Bridges

Client : Engineering & Civil Org. of Tehran

Contract type : Design & Supervision

1995-1999



This project including bridges with prefabricated concrete beams, arch bridges in height and the widest steel deck bridge in Tehran. Span of the steel deck over the rail road is about 25 meters with five, 2-way lanes.



Middle East International Marketing Tower (SEPAD)

Client: SEPAD Dasht-e-khavar Company

Contractor: Mahdasht Company

Contract type: Structural Design



This 27-storey tower is 102 meters high, with total area of 126,000 square meters.



“ When you choose **SANO**,
you work with some of the finest professionals
who will understand your goals and put their
skills and resources to earn your trust and
confidence on every project. ”